



ROYAL COLLEGE OF
PHYSICIANS AND
SURGEONS OF GLASGOW



Joint Surgical Colleges Fellowship Examination

Computer Based Testing - Tutorial



Tutorial

You will be taken through a brief tutorial before starting your exam. The time you take to go through the tutorial will **NOT** be deducted from your exam time.

Select **Next** to begin the tutorial.

[Next →](#)**Time and Progress**

You will always be able to view the remaining time in the upper right corner of the screen. Just below the time you will see e.g. '1 of 9', indicating that you are viewing screen/question 1 of 9.

You can, if you wish, hide the time remaining and question number reminders by clicking on them. To restore them, click on the icons  and . The time will, however, automatically reappear when you have ten (10) minutes remaining.

Navigation

You may navigate through the exam using any of the following, but using the Mouse is recommended:

- Mouse
- Tab key on keyboard
- Touch screen facility. If this facility is available and activated you should note that the **whole** screen is an activated sensor area

The **Previous** and **Next** buttons will be available throughout the exam.

Next moves you forward one screen.

Previous moves you back one screen.

The navigation buttons and functions can be selected by:

- clicking the appropriate button with the mouse,
- using the Tab key to move through the options and pressing the spacebar to select an option,
- touching the appropriate area on the screen

Using the Scrollbar

Some questions may have up to 15 options and may not all fit on the screen. For such questions, a scroll bar appears and you must use this to view all options.

If you attempt to move onto a new question without scrolling to the bottom of the screen, a prompt will appear to remind you to view all the options.

Select the **Next** to continue.

[← Previous](#) [Next →](#)

Single Best Answer Questions

A single best answer question appears like this:

Urology SBA & EMI Pilot 1 September 2010 - Candidate Name Time Remaining 44:20
6 of 50
Flag for Review

Quinolones such as ciprofloxacin are commonly used in the treatment of prostatitis and epididymitis.

Which one of the following best describes their mechanism of action on bacteria?

- A. Inhibition of cell wall synthesis
- B. Inhibition of DNA synthesis
- C. Inhibition of folate synthesis
- D. Inhibition of protein synthesis
- E. Inhibition of RNA synthesis

Exhibit Display

If a question contains an image, an 'Exhibit' button will appear as shown below. Click this button to open the image/images.

Item Preview - Candidate Name Time Remaining 35:32
1 of 5
Flag for Review

 Exhibit

This is an example to show how an exhibit button will be displayed.

- A. Sky at night
- B. Moonlight sky
- C. Winter day
- D. Cloudy day
- E. Autumn day

End Exam Next →

Select **Next** to continue.

Glossary of Terms & List of Abbreviations Display

The Glossary of Terms and List of Abbreviations can be accessed by clicking the bar at the bottom of the screen. This bar will be available throughout the examination.

Select **Next** to continue.

Flag for Review

To flag a question, click the button in the upper right corner labelled **Flag for Review**. If you flag an item for review, whether you have answered it or not, a flag will appear next to that question on the review screen.

Review of questions must be carried out during the examination time.

Select **Next** to continue.

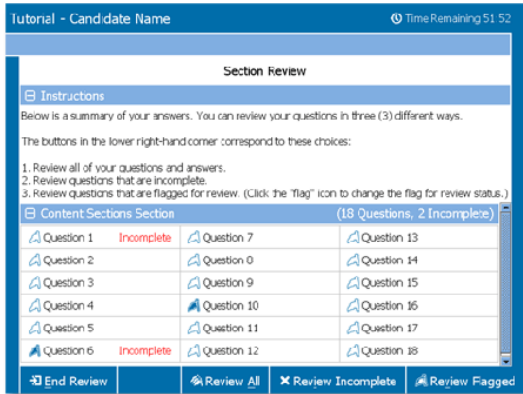
Using the Review Screen

The **Review Screen** will appear after the last question has been answered.

If you marked any questions **Flag for Review**, a flag will appear beside that item on the Review Screen. In the example below, items 6 and 10 were flagged for review. Unanswered items are displayed as "Incomplete."

Items can be reviewed in a number of ways:

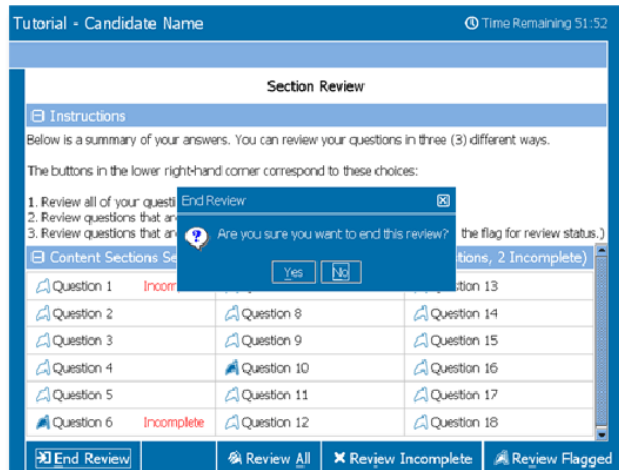
- Review All** - Review all the items and answers in the section.
- Review Incomplete** - Review only the items that were left incomplete.
- Review Flagged** - Review the items that are flagged for review.



Select **Next** to continue.

End Review

Please note when you select **End Review**, you will end this part of the examination. You will be prompted as shown below.



Select **Next** to continue.